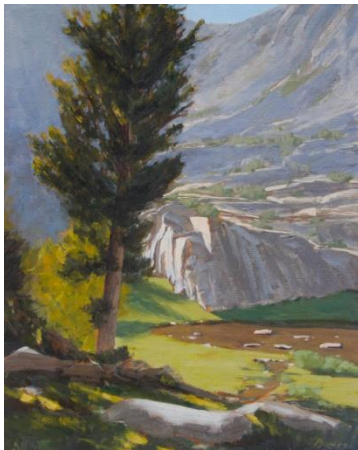


Mother Lode Art Association Newsletter

66th Juried Art Show Issue July/August 2019

Upcoming meetings: September 16, 2019. No regular meetings in July and August

How to be a Smarter Entry Star!



*"Off the Beaten Track" by M. Bowes
2019 Juried Art Show raffle prize*

Planning to enter the 66th Juried Art Show ? Do you have questions about Smarter Entry on-line submission? Need some guidance about photographing your art? Don't miss our informative live presentation! Show Administrator **Lorna Hunt** will walk us through the whole process. Photographer **Kim O'Connor** will be present to explain how to take excellent photographs of your artwork with your iPhone or simple camera! Bring artwork, bring your camera, and leave fully prepared to create your Smarter Entry account and submit competition-worthy images of your work.

Date: Monday, July 15. Time: 12:00 noon. Location: Tuolumne County Library, 480 Greenley Road, Sonora

Can't make it to the live presentation on July 15? See inside for full Smarter Entry instructions in print!

MLAA 66th Juried Art Show, 2019

Some members have questions about the Smarter Entry electronic submission process for entries in the Art Show. We're here to help!

The link below will take you to Smarter Entry. You can view the prospectus for both the 66th Juried Art Show and the concurrent Student Show, create your Smarter Entry account, pay your entry fees and submit photo images of your artwork. Note that the Student Show prospectus appears at the top of the page. Scroll down for the 66th Juried Art Show.

www.smarterentry.com/CallsForEntry/TCAA

Step 1: Download the prospectus

The Prospectus lists the requirements for show entries, including acceptable mediums, size limitations, framing requirements, deadlines for submission, etc. Click on the link The prospectus for our concurrent **student show** will be at the top of the page that appears. You will need to **scroll down** to find the **regular show**. **From this point, you can go on to create your Smarter Entry account, if you wish.**

Step 2: Photograph your artwork

This is the step that seems to scare a lot of people. Relax. You do not need expensive equipment, sophisticated software or an elaborate setup to produce an image for the Art Show. You can obtain fine results with your smart phone or any point-and-shoot digital camera. You may find this video helpful: <https://www.youtube.com/watch?v=S0g4a1Ge-Ds>

TO PREPARE IMAGES FOR ONLINE ENTRY PLEASE USE THE FOLLOWING CRITERIA:•

- File size no larger than 8 MB
- The dimensions of your image on the long side should be more than 800 pixels.
- JPG, TIF, or PNG format

Step 3: Create your Smarter Entry account

In order to create your account with Smarter Entry, you need to create your profile (personal information) and use your credit card to pay the entry fee for at least one entry. You can pay the fee now and return later to upload the images of your artwork. **Entry fees are nonrefundable. If you're not sure how many pieces you intend to enter, pay a lower**

number of entry fees and add more later as needed. Your information is saved under your account.

- Click on the link www.smarterentry.com/callsforentry/TCAA
- Click on the logo at the top of the prospectus for the show you want to enter, or on the green "register" tab at the bottom of the prospectus. Be sure you're entering the right show! This will take you to "Competition Login".
- If you are a RETURNING USER, log in using the original email and password you set when you last used Smarter Entry . If you have forgotten your password you will see a prompt button on the login page to to create a new password. Proceed with your entries.
- Or, if you're a FIRST TIME USER, create your account; following the prompts.
- **Press "submit" only once and wait patiently for the page to load. If you press more than once, you will have to start over, with a new password.**

When creating your account, there are a couple of things to be aware of:

- Disregard the "status" entry that says "nonmember".
- If you are already an MLAA member, click "NONE" in the "membership" box. If you want to join MLAA, you can do so and pay your dues (for the rest of 2019 only!) [here](#).

Step 4. Uploading your art images

Follow the instructions to upload your art images and the identifying information.:

- You can enter any image as a placeholder.
- You substitute another image, or change any information, up to the deadline for entries, with no extra charge.
- You can purchase more entries, up to the maximum, up to the deadline for entries.
- **No changes will be allowed after the contest closes.**

Be sure and name your images something YOU will recognize. "Untitled 1" and "Untitled 2" could cause confusion to you when we contact you about images that may have been chosen to hang.

Have questions? If you have questions regarding file sizing, file formats, rules, creating a Smarter Entry profile or submitting through your Smarter Entry profile, contact Contest Administrator Lorna Hunt via lhunt@mlode.com



Susan Kendall at work

Upcoming Mother Lode Art Association “Plein Air” Art Show

Dates: August/September 2019

Venue: Tuolumne County Library, 480 Greenley Rd, Sonora

Participants include: Susan Kendall, Susan Lea Hackett, Judie Cain, Barbara Young, Maureen Carden, Rana Ford, Celia Niemerow, Beth Robinson, Grace Glassey, Allison Blansit, Rose Ingalls, and Lorna Hunt



Fahey Cabins

A little bit about the show and our group. The Motherlode Art Association has been hosting events for over 60 years. It is a very active group and one of the most active is the “Plein Air” painting group.

What is this?

“Plein Air” was a term coined by the impressionist artists meaning in the open air. Artists set up their equipment, hence a little studio on location. They paint in the open air and usually complete, or complete most of, the painting on location. The paintings as a result look fresh and capture a moment in time. The media used in our group are watercolor on paper, oil on canvas or board and pastel on paper. “Plein Air” painting has been gaining in popularity ever since the French impressionists, and their California companions have been showing up to do this. California in particular has a huge “plein air” community, not only because of the beauty of our state but because of the sunshine and favorable conditions for painting “en plein air”. The Motherlode, Sierra Foothills and Sierra are particularly brilliant for this type of painting because of the limitless vistas, interesting western towns and vibrant terrain.



Rana Ford painting in Columbia

Our group, also known as “The Merry Band of Painters”, usually meets Tuesdays on location. We call our meet-ups, “Paint Outs”. Currently, Susan Leah Hackett of Strawberry is leading our “Paint Outs” and setting up our venues to paint. We



paint ensemble for several reasons: safety, helpful critiquing by fellow painters and because we genuinely like each other and like working together.

Some of our locations include, Columbia State Park, The Red Hills, Strawberry, Pinecrest, the 108 corridor, Indigeny Reserve, Sonora, Tuolumne City, Riverside Park, Fahey Cabins in Long Barn, Sonora neighborhoods and more.

What is fun to look at in this show will be how different artist interpret the same location. The diverse styles are like a signature or thumb print for each individual artist.

For more information contact: susankendall@comcast.net

Museum Happenings by John Sharum

Crocker Museum

- April 28-August 25, 2019: **Big Ideas: Richard Jackson's Alleged Paintings** (Original Sacramento artist's fanciful show combining a playful sense of humor and sharp wit with an unconventional approach to painting)
- June 23-September 29, 2019: **Chiura Obata: An American Modern** (Survey of his seven decade career with over 100 works)

De Young Museum July 13-October 6, 2019:

- **Ed Hardy: Deeper than Skin** (Paintings, drawings and prints by famed tattoo artist from 1950 to today)
- July 27-February 2, 2020: **Moving Forward, Looking Back: Prints from the Anderson Graphic Arts Collection** (Works by Bartlett, Dine, Hockney, Lichtenstein and Raushenberg show how they adapted creative spirit from earlier artists such as Bellini, Matisse, Monet and Picasso to inform their work)

Legion of Honor Museum

- April 6-September 8, 2019: **Early Rubens**
- May 25-August 4, 2019: **Fantaisie Francaise: Prints from the Vanderryn Collection** (French etchings and woodblocks from the 19th Century)

SFMOMA May 19-September 2, 2019: Andy Warhol: From A to B and Back Again (First retrospective in the US since 1989 featuring dozens of his most influential works)

In the Window, July/August 2019: The Aloft Art Gallery

By Laurie Lehmann

The Aloft Art Gallery is thrilled to have two “Artists in the Window” for the months of July and August: **Harry Nakamoto**, ceramic artist and **Tara Schendel** photographer. Two very different arts that compliment each other beautifully.

The Aloft is located at 167S. Washington Street, Sonoma, California. Our summer hours are 7 days a week 10:00 am – 4:00 pm. For more information be sure and check out our website at <http://aloftartgallery.com> .

Harry Nakamoto

I recently asked Harry about how he became a ceramic artist and a bit about his process.

“When I was attending San Jose State preparing for graduate studies in biochemistry as a second career, I filled an open period with beginning ceramic art. My teacher's name was James Lovera. Many classes followed with Jim and he eventually convinced me to change my graduate objective to ceramic art. My spouse and I are both grateful to Jim for becoming our lifelong friend and helping us find our way with pots.

With few exceptions, my work is done on the potters' wheel, mostly vessels and some sculptures. I use store-bought high and low fire clays, depending on the heat treatment the pieces will be exposed to. Glaze materials, too, are of commercial sources except when I am fortunate to find a natural source for experiments.

The next step is to either be wood fired; raku fired or burnished ware (simulated primitive finish). The fire-effect of a reduction kiln can produce dramatic decorations. I do wood firing in my "anagama" (cave kiln.) The kiln loading consumes 3 days. The kiln is then closed, lit, and wood is continually stoked into the firebox, raising the temperature to 2450 degrees Fahrenheit each of the 3 days needed to complete the firing. During the firing at the higher temperatures ash from the wood fuel drifts onto the pots and combines with the clay surfaces to create a natural glaze, multi-colored and with swirling patterns. Exciting, we say.”

Tara Schendel

Tara Schendel is a photographer who says, “I can't draw or paint thus photography! As time has gone by, and since being in Aloft, I've really taken in by watercolor and pastel artists. I think that is reflected in my photography evolution. I am printing on Epson Velvet, which is thick and textured like watercolor paper. It takes a lot of ink, but the images are elegant and rich. And while they maintain a nice detail and contrast, they are not harsh. My images are more intricate now than in the past, where I focused more on geographic forms and hard lines and shadow. No more. Now I love the messiness and complexity of the world. I

love springtime stormy skies, where there is a gray, but out front is a bright green, orange, or yellow.

I usually print all my own work because I believe photography is a craft. By doing this myself, I am offering my viewers my craftsmanship. There are sometimes flaws and imperfections in the prints, but that is part of the craft. And even if I am printing a duplicate, even on a digital printer, each one is individual- just like in darkroom days. Currently I am also focusing on the 20 x 10 format. The elongated look is, in many ways, how we see the world- or at least how I see it because I am often looking through the windshield when I see that perfect shot!"

Next time you are in downtown Sonora be sure to stop by and see Harry and Tara's window and then pop in to see all the magnificent artwork available, be it a card for a friend or a painting for your wall. When you do, say hello to your greeter, it will most likely be one of the hard working co-op Artists that help make it art happen at the Aloft Art Gallery!

JOIN THE MOTHER LODE ART ASSOCIATION TODAY!

Fill out the membership application and bring it with your check to the next meeting or mail it today. Thank you. If you are already a member, cut this out and pass it on to someone you think might be interested in becoming a MLAA member. MOTHER LODE ART ASSOCIATION

MEMBERSHIP APPLICATION

Name _____

Address _____

City _____ State _____ Zipcode _____

Phone _____ Email _____

Membership Categories: Individual \$20.00 General _____ \$50.00 Patron _____ \$100.00

Benefactor _____ \$250.00+ Lifetime _____ (check one) Business \$50.00 Patron _____ \$100.00+

Benefactor _____ Please make checks payable to: MOTHER LODE ART ASSOCIATION. P.O.

Box 5140 Sonora, CA 95370

We encourage you to enjoy the wonderful Artist Demonstrations and Programs we have the 3rd Monday of each month at the Tuolumne County Library, Greenley Rd., Sonora. Meetings are usually at 1:00 pm.